

Одвртка крстач (PH) TBI изведба

615TBI



Profiles



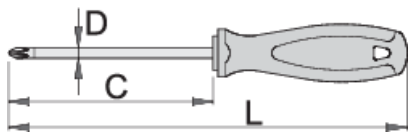
Standards







625NI Дупла одвртка крстач (PZ) 615NI Одвртка крстач (PH) 628CR Кратка одвртка со двоен крстач (PZ) CR 626CR Кратка одвртка со двоен крстач (PH) CR 625CR Дупла одвртка крстач (PZ) CR 616CR Одвртка крстач (PH) CR шестоаголна појачана 615CR Одвртка крстач (PH) CR 617W Дупла крстач одвртка (PZ), шестоаголна, појачана 616W Одвртка крстач (PH) шестоаголна, појачана 628TBI Кратка одвртка двоен крстач (PZ) TBI 617TBI Дупла крстач одвртка (PZ), шестоаголна и појачана TBI 625TBI Дупла крстач одвртка (PZ) TBI 616TBI Одвртка крстач (PH) TBI, шестоаголна, појачана 615TBI Крстич

Product features

- врв од: специјален хард хром ванадиум челик, целосно зајакнат и кален
- стеблото на одвртката-хромирано, врв појачан
- рачка: ергономска форма
- трикомпонентен материјал
- отвор во рачката за закачување
- изработен според стандард ISO 8764-1,2

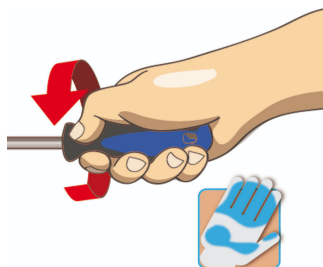
- Направени согласно стандарт DIN 520-PH



					
611701	PH 0	60	145	3	34
611702	PH 1	80	180	4.5	60
611703	PH 1	200	300	4.5	74
611704	PH 2	100	210	6	94
611705	PH 2	150	260	6	104
611706	PH 2	200	310	6	114
611707	PH 3	150	270	8	154
611708	PH 4	200	320	10	230

* Сликите на производите се симболични. Сите димензии се во мм, тежината е во грамови. Сите наведени димензии може да се разликуваат во ниво на толеранција

Usage (pictures)



Safety tips



- Use a screw holding screwdriver to get screws started in awkward, hard-to-reach areas.
- Use a stubby screwdriver in close quarters where a conventional screwdriver cannot be used.
- A rounded tip should be redressed with a file; make sure edges are straight.
- Screwdrivers used in the shop are best stored in a rack. This way, the proper selection of the



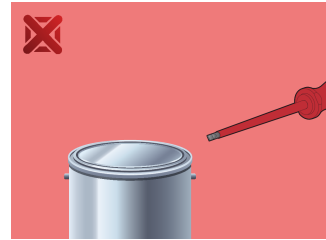
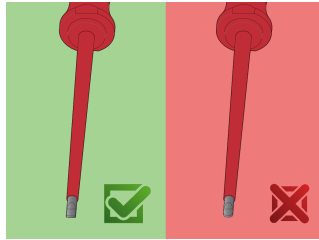
- Don't use pliers on the handle of a screwdriver to get extra turning power. A wrench should only be used on the square shank or bolster of a screwdriver that is especially designed for that purpose.
- Don't expose a screwdriver blade to excessive heat as it may reduce the hardness of the blade.
- Don't use a screwdriver with a split or broken handle.

right screwdriver can be quickly made.

- Keep the screwdriver handle clean; a greasy handle is apt to cause accidents.
- A screwdriver should never be used as pry bar. If it is overstressed in this manner, the blade might break and send a particle of steel into the operator's arm or even towards his eyes.

- Don't use a regular screwdriver to check a storage battery or to determine if an electrical circuit is live.

Safety (pictures)



Frequently asked questions

Can you hit the screwdriver?

No, you should not hit the screwdriver.

How do we clean a multi-component handle?

With cleaning agents designed for PP/TPE material.

Can a screwdriver with a PH tip be used for PZ cross head screws?

Its use is not recommended as this can cause damage to the screw.